

# ODYSSEY X3

# Texecom



Illuminate your logo,  
elevate your brand,  
deliver the highest quality security.

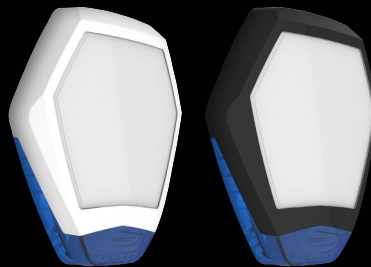
## High performance external sounder

The new Odyssey X3 brings innovation and a modern twist to external sounders, providing unparalleled performance and extensive features to benefit installers and end users alike.

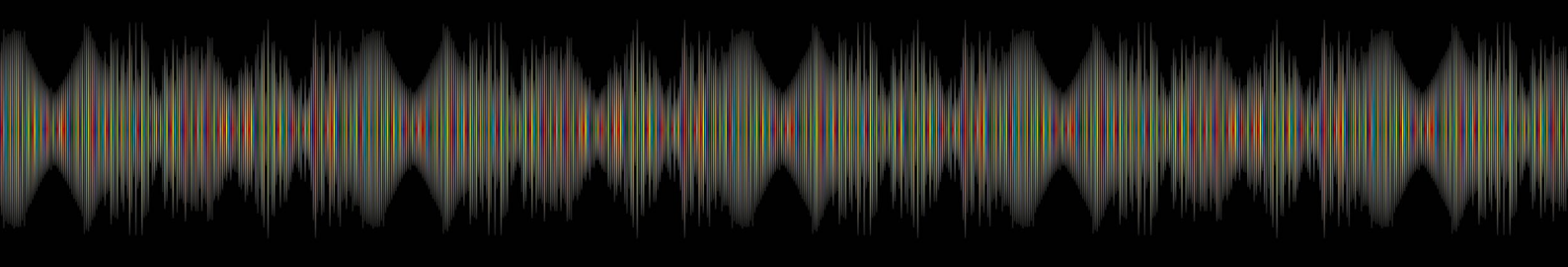
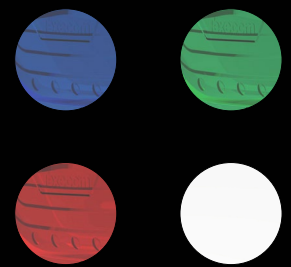
### Odyssey X3 Key Features:

- Custom graphic inserts for professional branding
- A choice of 6 electronic backplate modules
- Illuminated X3 cover options
- Wired, wireless & dummy versions
- White comfort LEDs
- A host of installer-friendly features
- Designed to comply with EN50131-4

### Frame Colour Options:



### Lens Colour Options:



## TECHNICAL SPECIFICATIONS

WIRED UNITS			
Supply Voltage:	12-16 VDC (13.7 nominal)		
Current Drain (typical at 13.7VDC):			
Quiescent:	18mA +40mA(Backlit version)		
Strobe:	100mA		
Sounder	SAB	LC	SCB
X-E:	285mA	160mA	30mA
X-BE:	325mA	200mA	70mA
X:	405mA	190mA	30mA
X-B:	445mA	230mA	70mA
Standby Battery :			
Type:	NiMh Stack		
Voltage:	7.2VDC (nominal)		
Capacity:	250mAh		
Flash Tube:	1Ws Xenon		
Comfort LEDs:			
Brightness:	100mcd (typical)		
Flash Rate (tamper secure):	1Hz alternating (typical)		

WIRELESS UNITS	
Supply Voltage:	12V DC
Battery Type:	8 x Lithium type (AA 1.5V)
High Power LED Strobe:	320lm
Comfort LEDs:	
Brightness:	100mcd (typical)
Flash Rate (tamper secure):	1/4 sec flash at 5 sec intervals alternating (typical)
Wireless Frequency:	868.0MHz - 868.6MHz

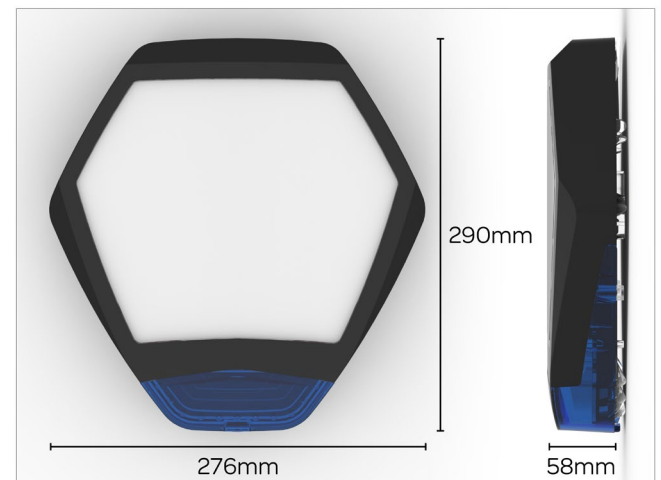
ENVIRONMENTAL	
Volume (SAB mode at 13.7 VDC):	
X-W:	105dB(A)
X-E & X-BE:	109dB(A)
X & X-B:	115dB(A)
Acoustic Output:	Varying Sound Output
Cut-Off Time:	15 minutes
Waterproof Coating:	Conformal
Operating Temperature:	-25°C to +55°C
Storage Temperature:	-25°C to +60°C

## ODYSSEY X3 PART NUMBERS

ODYSSEY X COVERS	
PART	NAME (Frame Colour/Lens Colour)
WDB-0001	Odyssey X3 Cover (White/Blue)
WDB-0002	Odyssey X3 Cover (White/Red)
WDB-0003	Odyssey X3 Cover (White/White)
WDB-0008	Odyssey X3 Cover (White/Green)
WDB-0004	Odyssey X3 Cover (Black/Blue)
WDB-0005	Odyssey X3 Cover (Black/Red)
WDB-0006	Odyssey X3 Cover (Black/White)
WDB-0007	Odyssey X3 Cover (Black/Green)

ODYSSEY X ELECTRONIC OPTIONS		
PART	NAME	DESCRIPTION
WDC-0001	Odyssey X-BE	Grade 2 Sounder with Integral Backlight
WDC-0002	Odyssey X-B	Grade 3 Sounder with Integral Backlight
WDD-0001	Odyssey X-E	Grade 2 Sounder
WDD-0002	Odyssey X	Grade 3 Sounder
WDE-0001	Odyssey X-D	Dummy Sounder
GBV-0001	Odyssey X-W	Wireless Sounder

## ODYSSEY X3 DIMENSIONS



## HOW TO CREATE YOUR ODYSSEY X:

