



WEATHERPROOF EXIT BUTTON

EXIT BUTTONS

Market leading door release button, that is both hard wearing and cost effective. Suitable for use in applications up to 30V.



WP66-G-GB/PTO



WP66-G-GB/GR



WP66-Y-RB/PA

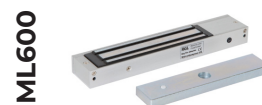
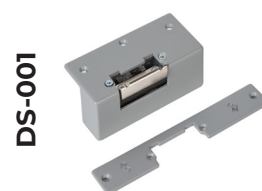
SPECIFICATION

- WP66
- Contacts: Double pole N/O - N/C
 - Output: 4 AMP contact @ 30V AC/DC
 - Wear resistant legend (others available on request)
 - External use
 - IP66 ingress protection (button & enclosure)
 - Robust two part cross polymer housing
 - M16/20 pre moulded conduit knockouts
 - Silver contacts
 - Operating temperature -20° to +60°c
 - Operating travel: 2mm
 - Contact resistance: 10m OHM (Max)
 - Operating life (mechanical): 1,000,000

FEATURES

- WP66
- Large plastic green/red button
 - Momentary operation / contact
 - High impact plastic back box
 - Surface fitting
 - Easy clean surface.
 - Ideal for general/sensitive areas
 - IP66 weatherproof unit

OTHER PRODUCTS



DIMENSIONS

- WP66
- 85H x 90W x 60/80D (mm)
 - 248g (Boxed)
 - 200g (Unboxed)

CONTENTS

- WP66
- Green/Red Dome Exit Button
 - 4 Screws
 - Surface Enclosure



Manufactured by a BSIA Member