



STAINLESS STEEL BUTTON

EXIT BUTTONS

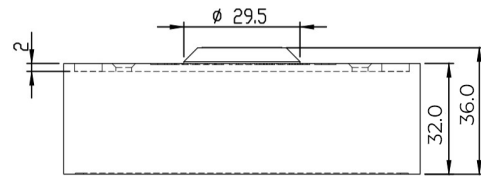
Market leading stainless steel buttons, that are both hard wearing and cost effective. Suitable for use in applications up to 30V.



EBSS02/PTE



EBSS/AP/PTE



SPECIFICATION

- EBSS02 / EBSS25 / EBSS/AP
- Contacts: Double pole N/O - N/C
 - Output: 4 AMP contact @ 30V AC/DC
 - Wear resistant legend
 - Security screws (allen key type)
 - Internal use
 - Button rated IP54 ingress protection
 - Silver contacts
 - Operating temperature -20° to +60°c
 - Operating travel: 2mm
 - Contact resistance: 10m OHM (Max)
 - Operating life (mechanical): 1,000,000

EBSS02 & EBSS/AP - 22mm Button
EBSS25 - 25mm Button

FEATURES

- EBSS02 / EBSS25 / EBSS/AP
- Stainless steel button
 - Momentary operation / contact
 - High impact plastic back box
 - Can be surface or flush fitting
 - Easy clean surface
 - Ideal for general / sensitive areas
 - Screw footprint for flush fitting onto standard back box
 - Distance between fixing holes 60mm

- Alternative Text
- Door Release
 - Emergency Running Man Symbol (No Text)
 - Blank (No Text)
 - Arabic

OTHER PRODUCTS

EBNT/TF-1



EXTR02



ML600



DU-GB/PTE



DIMENSIONS

- EBSS02 / EBSS25
- 85x85x28 (mm)
 - 240g (Boxed) • 198g (Unboxed)
- EBSS/AP
- 85x39x28 (mm)
 - 128g (Boxed) • 108g (Unboxed)

CONTENTS

- EBSS02 / EBSS25 / EBSS/AP
- Stainless Steel Exit Button
 - Stainless Steel Plate (2mm)
 - 2 Security Screws
 - Allen Key
 - Surface Box



Manufactured by a BSIA Member