

HikCentral-Workstation/64

HikCentral-Workstation/64 is an integrated security software designed to meet versatile security challenges in one intuitive platform: from managing individual systems such as video security, access control, intrusion alarm, etc., to collaborating multiple systems under a unified architecture. While protecting people and property, it makes daily operations more efficient, and helps various kinds of users make smarter decisions.



Key Feature

Home Page

- Providing two predefined Home page modes on Web Client, including system installation and management mode, security control and management mode
- Supports customizing Home page mode on Web Client
- Supports customizing control panel on Control Client
- Supports switching Home page mode for visualization and non-visualization management
- Providing different report dashboards for resource status, access records, vacant parking spaces, alarms, etc., on the Home page of Web Client

Wizard

- Providing wizards for video management, access control, vehicle management, alarm detection on Web Client

Live View and Playback

- Up to 256 channels live view simultaneously
- Custom window division configurable
- Viewing maps and real-time events during live view and playback
- Stream type self-adaptive, transcoded playback, and frame- extracting playback
- Fisheye dewarping of multi-channel
- Controlling PTZ in visualization way
- Supports decoding stream from cameras with high-definition, such as PanoVu series camera

Visual Tracking

Recording and Storage

- Recording schedule for continuous recording, event recording and command recording
- Storing videos on encoding devices, Hybrid SANs, cloud storage servers, pStors
- Providing main storage and auxiliary storage
- Providing video copy-back
- Storing alarm pictures on NVRs, Hybrid SANs, cloud storage servers, pStors, or HikCentral server
- Supports search of VCA event related videos, video footages, and event triggered video footages.

Event and Alarm Management

- Camera linkage, alarm pop-up window and multiple linkage actions
- Multiple events for video security, access control, resource group, resource maintenance, etc.
- Supports adding combined alarms in a visualization way



Access Control and Video Intercom

- Setting schedules for free access status and access forbidden status of doors
- Supports multiple access modes for both card reader authentication and person authentication
- Supports assigning an access level to persons, assigning access levels to persons, assigning access levels to person groups, and assigning access levels to an access group
- Supports advanced functions such as multi-factor authentication, anti-passback, and multi-door interlocking
- Controlling door status in real-time
- Calling indoor station by the Control Client
- Calling the platform by door station and indoor station, and answering the call by the Control Client

Security Control

- Real-time alarm management for added security control panels
- Adding zone as hot spot on E-map and viewing the video of the linked camera
- Event and alarm linkage with added cameras, including pop-up live view, captured picture
- Subscribing the events that the Control Client can display in real-time
- Acknowledging the received alarm on the Control Client

Entrance and Exit Control

- Managing parking lot, entrances and exits, and lanes.
- Supports linking a LED screen with lane for information display
- Setting entry & exit rules for vehicles in the vehicle lists as well as vehicles not in any vehicle lists
- Entrance and exit control based on license plate recognition, card, or video intercom
- Viewing real-time and history vehicle information and controlling barrier gate manually on the Control Client

Temperature Screening

- Displaying the skin-temperature and whether wearing a mask or not about the recognized persons in real time
- Triggering events and alarms when detects abnormal temperature and no mask worn
- Viewing reports about skin-surface temperature and mask-wearing

Face and Body Recognition

- Displaying the information of the recognized persons in real-time
- Searching history records of recognized persons, including searching in captured pictures, searching matched persons, searching by features of persons, and searching frequently appeared persons

Network Management

- Managing network transmission devices such as switches, displaying the network connection and hierarchical relationship of the managed resources by a topology
- Viewing the network details between the device nodes in the topology, such as downstream and upstream rate, port information, etc. and checking the connection path
- Exporting the topology and abnormal data to check the device connection status and health status

Software Specification

Features		Maximum Performance
Devices and Resources	Cameras <i>*Including ANPR Cameras and Cameras with Face Capture Function</i>	64
	Managed Device IP Addresses <i>*Including Encoding Devices, Access Control Devices, Security Control Devices, and Remote Sites</i>	256
	Video Intercom Devices <i>*Including Indoor Station</i>	16
	Alarm Inputs (Including Zones of Security Control Devices)	32
	Alarm Outputs	32
	Alarm Inputs of Security Control Devices	32
	ANPR Cameras	8
	Cameras with Face Capture Function	4
	Security Radars	2
	Areas	128
	Cameras per Area	64
	Alarm Inputs per Area	32
	Alarm Outputs per Area	32
Recording	Recording Schedule	128
	Recording Schedule Template	32
Event & Alarm	Event and Alarm Rules	128
	Storage of Events or Alarms without Pictures	10/s
	Events or Alarms Sent to Clients <i>*The clients include Control Clients and Mobile Clients.</i>	10/s 16 Clients/s
	Notification Schedule Templates	100
Picture	Picture Storage <i>*Including event/alarm pictures, face pictures, and vehicle pictures.</i>	10/s
Reports	Regular Report Rules	64
	Event or Alarm Rules in One Event/Alarm Report Rule	32
	Records in One Sent Report	10,000 or 10 MB
	Resources Selected in One Report <i>*With this limitation, you can generate a neat and clear report via the Control Client and it costs less time.</i>	20
Data Storage	Data Retention Period	Stored for 6 Months
Users and Roles	Concurrent Accesses via Web Clients and Control Clients	16
	Concurrent Accesses via Mobile Clients	16
	Users	32
	Roles	32
Vehicle (ANPR)	Vehicle Lists	50
	Vehicles per Vehicle List	500
Entrance & Exit	Lanes	4
	Cards Linked with Vehicles	2,500
	Vehicle Passing Frequency in Each Lane	1 Vehicle/s
Face Comparison	Persons with Profiles for Face Comparison	10,000
	Face Comparison Groups	16
	Persons in One Face Comparison Group	1,000
Access Control	Persons with Credentials for Access Control	5,000
	Total Credentials (Card + Fingerprint)	25,000
	Cards	25,000
	Fingerprints	20,000
	Profiles	5,000

	Access Points (Doors + Outdoor Station)	16
	Access Groups	32
	Persons in One Access Group	5,000
	Access Levels	32
	Access Schedules	32

Decoding Performance of Control Client

Resolution	Video Encoding Type	Maximum Hardware Decoding Channels	Maximum Software Decoding Channels
4CIF (704*576)	H.264	44	52
	H.265	64	44
1920 × 1080	H.264	8	8
	H.265	9	6
2560 × 1440	H.264	5	4
	H.265	5	3
3840 × 2160	H.264	2	2
	H.265	2	1
2560 × 2560 (Fisheye Camera)	H.264	4	3
	H.265	4	3
4000 × 4000 (Fisheye Camera)	H.264	2	1
	H.265	2	1

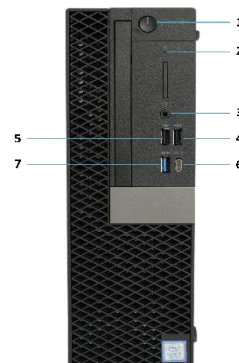
Hardware Specification



Processor	Intel® Core™ i5-8500 (6Cores/9MB/6T/ Up to 4.1GHz/65W)
Operating Systems	Microsoft® Windows 10 IoT Ent (64-bit)
Memory	2 × 4GB 2666MHz DDR4 UDIMM
Graphics Card	Integrated Intel® HD Graphics 630
Storage	M.2 256GB SATA Class 20 solid state drive
NIC	Integrated Intel I219-LM Ethernet LAN 10/100/1000
I/O Ports	10 External USB: 1 × USB Type-C 3.1 Gen 2, 5 × 3.1 Gen 1 Type-A (1 Front, 4 Rear), 4 × USB 2.0, 1 × RJ-45, 2 × Displayport, 1 × Serial, 2 × PS/2
Form Factor	Small Form Factor
Power Supply	300W typical 90% Efficient PSU (80 PLUS Bronze)
Dimensions (H × W × D)	29cm × 9.26cm × 29.2cm (11.42" × 3.7" × 11.5")
Weight	7.57lbs / 5.26kg
Certification	CE, FCC, UL
Warranty	36 Months

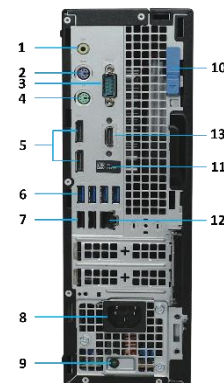
Front View

- 1- Power Button and Power Light
- 2- Hard Drive Activity Light
- 3- Headset/Universal Audio Jack Port
- 4- USB 2.0 Port with PowerShare
- 5- USB 2.0 Port
- 6- USB 3.1 Gen 2 Port with PowerShare
- 7- USB 3.1 Gen 1 Port



Back View

- 1- Line-Out Port
- 2- PS/2 Keyboard Port
- 3- Serial Port
- 4- PS/2 Mouse Port
- 5- Display Ports
- 6- USB 3.1 Gen 1 Ports
- 7- USB 2.0 Ports (Supports SmartPower On)
- 8- Power Connector Port
- 9- Power Supply Diagnostic Light
- 10- Release Latch
- 11- Service Tag Label
- 12- Network Port
- 13- HDMI Port



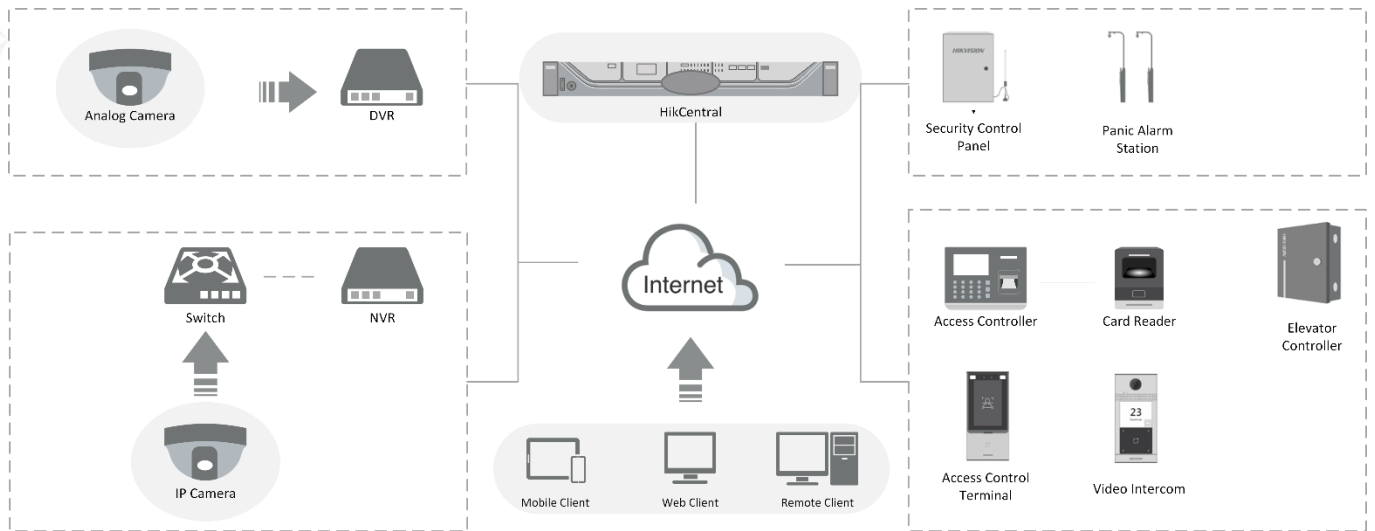
Note: By default, the DP to VGA adapter will be provided.

System Requirement

* For high stability and good performance, the following system requirements must be met.

Feature	Description
OS for Control Client	Microsoft® Windows 7 SP1 (32/64-bit) Microsoft® Windows 8.1 (32/64-bit) Microsoft® Windows 10 (64-bit) Microsoft® Windows Server 2008 R2 SP1 (64-bit) Microsoft® Windows Server 2012 (64-bit) Microsoft® Windows Server 2012 R2 (64-bit) Microsoft® Windows Server 2016 (64-bit) Microsoft® Windows Server 2019 (64-bit) <i>*For Windows 8.1 and Windows Server 2012 R2, make sure it is installed with the rollup (KB2919355) updated in April, 2014.</i>
Browser Version	Internet Explorer 10/11 and above Chrome 61 and above Firefox 57 and above Safari 11 and above (running on Mac OS X 10.3/10.4)
Database	PostgreSQL V9.6.13
OS for Smartphone	iOS 10.0 and later Android phone OS version 5.0 or later, and dual-core CPU with 1.5 GHz or above, and at least 2G RAM
OS for Tablet	iOS 10.0 and later Android tablet with Android OS version 5.0 and later

Typical Application



Distributed by

**HIKVISION®****Headquarters**

No.555 Qianmo Road, Binjiang District,
Hangzhou 310051, China
T +86-571-8807-5998
overseasbusiness@hikvision.com

Hikvision USA
T +1-909-895-0400
sales.usa@hikvision.com

Hikvision Australia
T +61-2-8599-4233
salesau@hikvision.com

Hikvision India
T +91-22-28469900
sales@pramahikvision.com

Hikvision Canada
T +1-866-200-6690
sales.canada@hikvision.com

Hikvision Thailand
T +662-275-9949
sales.thailand@hikvision.com

Hikvision Europe
T +31-23-5542770
sales.eu@hikvision.com

Hikvision Italy
T +39-0438-6902
info.it@hikvision.com

Hikvision Brazil
T +55 11 3318-0050
Latam.support@hikvision.com

Hikvision Turkey
T +90 (216)521 7070- 7074
sales.tr@hikvision.com

Hikvision Malaysia
T +601-7652-2413
sales.my@hikvision.com

Hikvision UK & Ireland
T +01628-902140
sales.uk@hikvision.com

Hikvision South Africa
Tel: +27 (10) 0351172
sale.africa@hikvision.com

Hikvision France
T +33(0)1-85-330-450
info.fr@hikvision.com

Hikvision Kazakhstan
T +7-727-9730667
nikia.panfilov@hikvision.ru

Hikvision Vietnam
T +84-974270888
sales.vt@hikvision.com

Hikvision UAE
T +971-4-4432090
salesme@hikvision.com

Hikvision Singapore
T +65-6684-4718
sg@hikvision.com

Hikvision Spain
T +34-91-737-16-55
info.es@hikvision.com

Hikvision Tashkent
T +99-87-1238-9438
uzb@hikvision.ru

Hikvision Hong Kong
T +852-2151-1761
info.hk@hikvision.com

Hikvision Russia
T +7-495-669-67-99
sateru@hikvision.com

Hikvision Korea
T +82-(0)31-731-8817
sales.korea@hikvision.com

Hikvision Poland
T +48-22-460-01-50
info.pl@hikvision.com

Hikvision Indonesia
T +62-21-2933759
Sales.Indonesia@hikvision.com

Hikvision Colombia
sales.colombia@hikvision.com