

BF318



REMOTE LED INDICATOR

THIS EQUIPMENT MUST ONLY BE INSTALLED BY A SUITABLY SKILLED AND TECHNICALLY COMPETENT PERSON

GENERAL

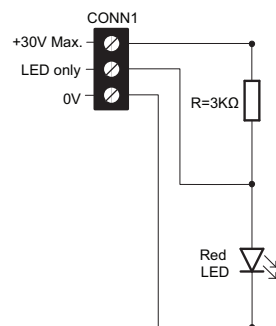
The BF318 is a high quality remote LED indicator specifically designed for use in fire alarm systems. It incorporates a high-intensity, wide-angle red LED which is clearly visible from the front of the plate when active.

Its primary use is to indicate the activation of hidden or out-of-sight fire detectors. The front label includes a white 'write on' panel allowing installers to add their own personalised text such as equipment locations. The unit will fit on 16mm deep flush or surface mount back boxes.



CONNECTIONS FROM A FIRE DETECTOR BASE

Refer to the detector manufacturers' instructions before installation to verify the connections from the detector base. Only use the designated connections. Failure to do so may result in non-working detectors and/or damage the BF318 unit.



BF318's INTERNAL PCB LAYOUT

The +30V Max. input on the BF318 board has an in-built 3KΩ current limiter (see fig. left) to prevent damage to the unit.

We recommend initially connecting a current limited detector using the **0V** & **+30V Max.** terminals. If the brightness and visibility of the BF318 is poor, connect the detector using the **0V** & **LED only** terminals (Note that the max current is 25mA).

Connect the detector base's negative or low remote LED connection to the **0V** input.

Connect the detector base's positive or high remote LED connection to the **LED only** input or to the **+30V Max.** input.

CONNECTIONS FROM A NON-CURRENT LIMITED SOURCE

If connecting the BF318 to a non-current limited source (e.g. a fire alarm sounder circuit), you **must** only use the **0V** & **+30V Max.** terminals. Failure to connect this way may result in non-working devices and/or damage the BF318 unit.

TECHNICAL SPECIFICATION

Current rating using 0V & +30V Max.	10mA @ 30V d.c. (Max); 1.3mA @ 6V d.c. (Min).
Current rating using 0V & LED only	Max. current 25mA (up to 40°C). Refer to the detector manufacturers' instructions for details.
Operating temperature	-10°C to +60°C.

E&OE. No responsibility can be accepted by the manufacturer or distributors of the fire alarm ancillaries for any misinterpretation of this instruction, or for the compliance of the system as a whole. The manufacturers policy is one of continuous improvement and we reserve the right to make changes to product specifications at our discretion and without prior notice.

BF318



REMOTE LED INDICATOR

THIS EQUIPMENT MUST ONLY BE INSTALLED BY A SUITABLY SKILLED AND TECHNICALLY COMPETENT PERSON

GENERAL

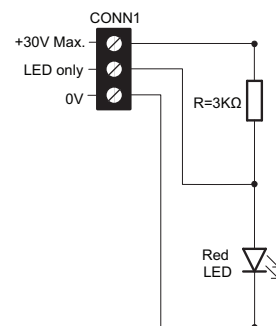
The BF318 is a high quality remote LED indicator specifically designed for use in fire alarm systems. It incorporates a high-intensity, wide-angle red LED which is clearly visible from the front of the plate when active.

Its primary use is to indicate the activation of hidden or out-of-sight fire detectors. The front label includes a white 'write on' panel allowing installers to add their own personalised text such as equipment locations. The unit will fit on 16mm deep flush or surface mount back boxes.



CONNECTIONS FROM A FIRE DETECTOR BASE

Refer to the detector manufacturers' instructions before installation to verify the connections from the detector base. Only use the designated connections. Failure to do so may result in non-working detectors and/or damage the BF318 unit.



BF318's INTERNAL PCB LAYOUT

The +30V Max. input on the BF318 board has an in-built 3KΩ current limiter (see fig. left) to prevent damage to the unit.

We recommend initially connecting a current limited detector using the **0V** & **+30V Max.** terminals. If the brightness and visibility of the BF318 is poor, connect the detector using the **0V** & **LED only** terminals (Note that the max current is 25mA).

Connect the detector base's negative or low remote LED connection to the **0V** input.

Connect the detector base's positive or high remote LED connection to the **LED only** input or to the **+30V Max.** input.

CONNECTIONS FROM A NON-CURRENT LIMITED SOURCE

If connecting the BF318 to a non-current limited source (e.g. a fire alarm sounder circuit), you **must** only use the **0V** & **+30V Max.** terminals. Failure to connect this way may result in non-working devices and/or damage the BF318 unit.

TECHNICAL SPECIFICATION

Current rating using 0V & +30V Max.	10mA @ 30V d.c. (Max); 1.3mA @ 6V d.c. (Min).
Current rating using 0V & LED only	Max. current 25mA (up to 40°C). Refer to the detector manufacturers' instructions for details.
Operating temperature	-10°C to +60°C.

E&OE. No responsibility can be accepted by the manufacturer or distributors of the fire alarm ancillaries for any misinterpretation of this instruction, or for the compliance of the system as a whole. The manufacturers policy is one of continuous improvement and we reserve the right to make changes to product specifications at our discretion and without prior notice.